



SILVER Findings Catalogue

Silver 925



SILVER Findings Catalogue

Silver 925

SPRING RINGS	pag. 5
LOBSTER CLAWS	pag. 7
TRIGGER CLASPS	pag. 8
END CAPS	pag. 9
QUALITY TAGS	pag. 11
JUMP RINGS	pag. 12
BEADS BY SHEET	pag. 13
BEADS BY TUBE	pag. 15
CYLINDERS	pag. 24
OVAL BEADS	pag. 25
SMOOTH ROUNDEL BEADS and CRIMP TUBES	pag. 29

ITAM S.p.A. reserves the right to remove items from production and to change the prices and the orders with no notice. We do not accept claims after 3 days from date of receipt of the order. No returns will be accepted without ITAM authorization.

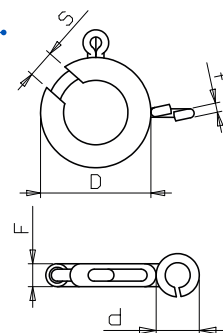
Arezzo Court is acknowledged for any controversy.

SPRING RINGS

STANDARD TYPE SPRING RINGS - OPEN TOP



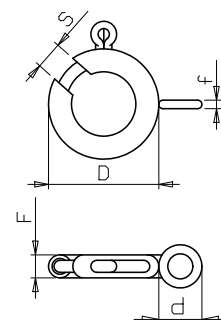
AMTNMA		D mm	F mm	d mm	f mm	s mm	Weight AG 925 (Pcs/Gr)
AMTNMA	5.0	5,10	1,30	3,00	0,70	0,80	8,00
AMTNMA	5.5	5,50	1,35	3,00	0,70	0,80	7,30
AMTNMA	5.9	6,10	1,50	3,10	0,75	1,10	5,60
AMTNMA	7.0	7,10	1,70	3,50	0,85	1,40	3,70
AMTNMA	8.0	8,20	1,90	4,00	1,00	2,10	2,60



STANDARD TYPE SPRING RINGS - CLOSED TOP



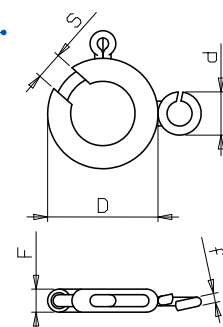
AMTNMC		D mm	F mm	d mm	f mm	s mm	Weight AG 925 (Pcs/Gr)
AMTNMC	5.0	5,10	1,30	3,00	0,70	0,80	8,00
AMTNMC	5.5	5,50	1,35	3,00	0,70	0,80	7,30
AMTNMC	5.9	6,10	1,50	3,10	0,75	1,10	5,60



STANDARD TYPE SPRING RINGS - FLAT TOP



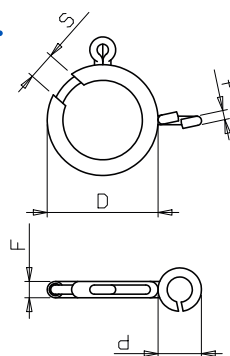
AMTNMP		D mm	F mm	d mm	f mm	s mm	Weight AG 925 (Pcs/Gr)
AMTNMP	5.0	5,10	1,30	3,00	0,70	0,80	8,00
AMTNMP	5.5	5,50	1,35	3,00	0,70	0,80	7,30
AMTNMP	5.9	6,10	1,50	3,10	0,75	1,10	5,60
AMTNMP	7.0	7,10	1,70	3,50	0,85	1,40	3,70
AMTNMP	8.0	8,20	1,90	4,00	1,00	2,10	2,60



LIGHT TYPE SPRING RINGS - OPEN TOP



AMTLMA		D mm	F mm	d mm	f mm	s mm	Weight AG 925 (Pcs/Gr)
AMTLMA	5.0	4,90	1,05	2,40	0,55	0,70	13,80
AMTLMA	5.0 all.	4,80	1,00	3,00	0,60	0,70	14,80
AMTLMA	5.5	5,40	1,20	2,40	0,55	0,90	10,20
AMTLMA	5.9	5,90	1,25	3,00	0,70	1,10	7,50
AMTLMA	7.0	6,90	1,40	3,10	0,75	1,30	5,60

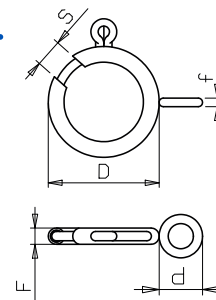


SPRING RINGS

LIGHT TYPE SPRING RINGS - CLOSED TOP



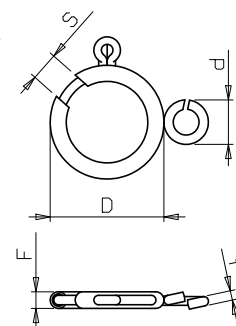
AMTLMC	D mm	F mm	d mm	f mm	s mm	Weight AG 925 (Pcs/Gr)
AMTLMC 5.0	4,90	01,05	2,40	0,55	0,90	13,80
AMTLMC 5.5	5,40	1,20	2,40	0,55	0,90	10,20
AMTLMC 5.9	5,90	1,25	3,00	0,70	1,10	7,50
AMTLMC 7.0	6,90	1,40	3,10	0,75	1,30	5,60



LIGHT TYPE SPRING RINGS - FLAT TOP



AMTLMP	D mm	F mm	d mm	f mm	s mm	Weight AG 925 (Pcs/Gr)
AMTLMP 5.0	4,90	1,05	3,00	0,70	0,80	11,10
AMTLMP 5.9	5,90	1,25	3,00	0,70	1,10	7,50

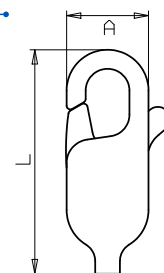


LOBSTER CLAWS

LOBSTER CLAWS WITHOUT RING



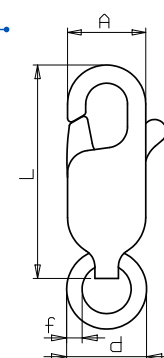
CHR	A mm	L mm	Weight AG 925 (Pcs/Gr)
CHR 8.0	3,30	8,30	4,60
CHR 9.0	3,85	10,20	2,50
CHR 11.0	4,30	11,75	1,80
CHR 13.0	5,25	13,85	1,30
CHR 16.0	6,20	15,95	0,80
CHR 18.0	9,00	18,10	0,40



LOBSTER CLAWS WITH RING



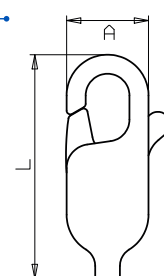
CHR CM	A mm	L mm	f x d mm	Weight AG 925 (Pcs/Gr)
CHR CM 8.0	3,30	8,30	0,75X3,60	3,70
CHR CM 9.0	3,85	10,20	0,80X4,00	2,20
CHR CM 11.0	4,30	11,75	0,90X4,60	1,50
CHR CM 13.0	5,25	13,85	1,00X5,20	1,10
CHR CM 16.0	6,20	15,95	1,25X5,90	0,60
CHR CM 18.0	9,00	18,10	1,30X6,70	0,40



LIGHT LOBSTER CLAWS WITHOUT RING



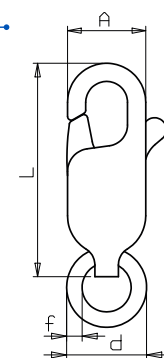
CHRL	A mm	L mm	Weight AG 925 (Pcs/Gr)
CHRL 9.0	3,85	10,20	3,20
CHRL 11.0	4,30	11,75	2,40
CHRL 13.0	5,25	13,85	1,60



LIGHT LOBSTER CLAWS WITH RING



CHRL CM	A mm	L mm	f x d mm	Weight AG 925 (Pcs/Gr)
CHRL CM 9.0	3,85	10,20	0,80X4,00	2,90
CHRL CM 11.0	4,30	11,75	0,90X4,60	2,00
CHRL CM 13.0	5,25	13,85	1,00X5,20	1,40

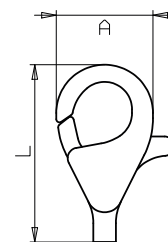


TRIGGER CLASPS

TRIGGER CLASPS WITHOUT RING



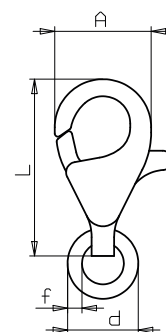
CHP		A mm	L mm	Weight AG 925 (Pcs/Gr)
CHP 8.0		4,50	8,30	3,80
CHP 9.0		5,00	9,20	3,00
CHP 11.0		6,00	11,00	1,90
CHP 13.0		7,00	13,00	1,20
CHP 16.0		8,50	16,00	0,70



TRIGGER CLASPS WITH RING



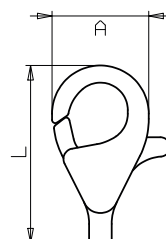
CHP CM		A mm	L mm	f x d mm	Weight AG 925 (Pcs/Gr)
CHP CM 8.0		4,50	8,30	0,75x3,60	3,30
CHP CM 9.0		5,00	9,20	0,80x4,00	2,50
CHP CM 11.0		6,00	11,00	0,90x4,60	1,50
CHP CM 13.0		7,00	13,00	1,00x5,20	1,10
CHP CM 16.0		8,50	16,00	1,25x5,90	0,60



LIGHT TRIGGER CLASPS WITHOUT RING



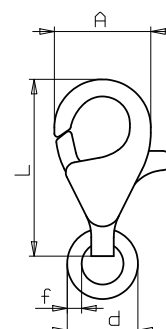
CHPL		A mm	L mm	Weight AG 925 (Pcs/Gr)
CHPL 9.0		5,00	9,20	3,60
CHPL 11.0		6,00	11,00	2,40
CHPL 13.0		7,00	13,00	1,56



LIGHT TRIGGER CLASPS WITH RING



CHPL CM		A mm	L mm	f x d mm	Weight AG 925 (Pcs/Gr)
CHPL CM 9.0		5,00	9,20	0,80x4,00	3,10
CHPL CM 11.0		6,00	11,00	0,90x4,60	2,10
CHPL CM 13.0		7,00	13,00	1,00x5,20	1,30

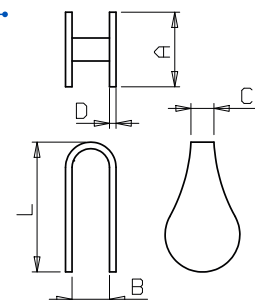


END CAPS

FLAT END CAPS



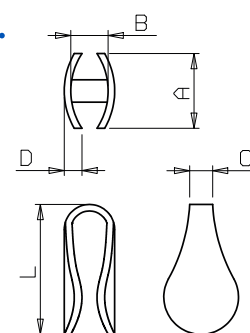
FP		A mm	B mm	C mm	D mm	L mm	Weight AG 925 (Pcs/Gr)
FP	1.0	1,00	1,80	0,70	0,35	5,30	30,60
FP	1.5	1,50	1,80	0,80	0,35	5,30	23,00
FP	2.0	2,00	2,00	0,80	0,35	5,50	17,80
FP	2.5	2,50	2,00	0,95	0,35	5,70	14,80
FP	3.0	3,00	2,00	1,00	0,35	6,00	11,30
FP	3.5	3,50	2,00	1,25	0,35	6,50	8,80
FP	4.0	4,00	2,00	1,20	0,35	7,00	7,20
FP	5.0	4,70	2,20	1,30	0,35	8,00	5,60
FP	6.0	5,80	2,20	1,50	0,35	8,50	4,50
FP	7.0	7,00	2,40	1,50	0,35	8,50	3,60
FP 0.35	8.0	8,00	2,40	1,50	0,35	9,00	3,00
FP 0.35	9.0	9,00	2,40	1,50	0,35	9,00	2,70
FP 0.35	10.0	10,00	2,60	1,80	0,35	9,50	2,20
FP 0.35	11.0	11,00	2,60	2,00	0,35	9,50	1,90
FP 0.50	8.0	8,00	2,40	1,50	0,50	9,10	2,00
FP 0.50	9.0	9,00	2,40	1,50	0,50	8,90	1,90
FP 0.50	10.0	10,00	2,60	1,80	0,50	9,65	1,50
FP 0.50	11.0	11,00	2,60	2,00	0,50	9,65	1,30



CONVEX END CAPS

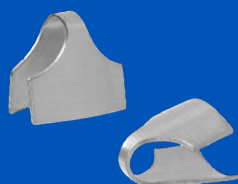


FB		A mm	B mm	C mm	D mm	L mm	Weight AG 925 (Pcs/Gr)
FB	2.5	2,50	2,00	0,95	0,75	5,70	13,60
FB	3.0	3,00	2,00	1,00	0,82	6,00	11,10
FB	3.5	3,50	2,00	1,25	0,85	6,50	8,50
FB	4.0	4,00	2,00	1,20	0,95	6,95	7,10
FB	5.0	4,70	2,20	1,30	1,00	7,90	5,40
FB	6.0	5,80	2,30	1,50	1,15	8,40	4,30
FB	7.0	7,00	2,40	1,50	1,35	8,40	3,50

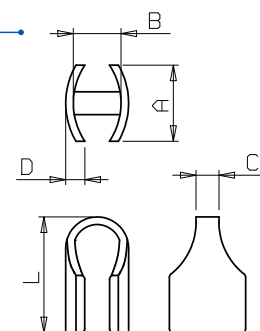


END CAPS

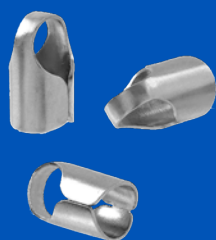
RECTANGULAR CONVEX END CAPS



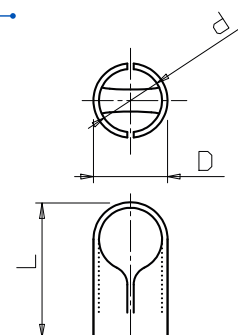
FBR	A mm	B mm	C mm	D mm	L mm	Weight AG 925 (Pcs/Gr)
FBR 3.5	3,50	2,00	1,10	0,90	5,85	9,40
FBR 4.0	4,00	2,50	1,20	0,95	6,05	7,20
FBR 5.0	5,00	2,50	1,30	1,10	7,60	5,20
FBR 6.0	6,00	3,00	1,40	1,25	7,60	4,10
FBR 7.0	7,00	3,00	1,50	1,35	7,60	3,70
FBR 8.0	8,00	3,00	1,50	1,35	7,60	3,30
FBR 10.0	10,00	3,00	1,50	1,35	7,60	2,80
FBR 12.0	12,00	3,00	1,50	1,35	7,60	2,40
FBR 15.0	15,00	3,00	1,50	1,35	7,60	1,90



ROUND END CAPS



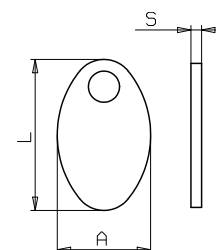
FT	d mm	D mm	L mm	A mm	Weight AG 925 (Pcs/Gr)
FT 1.0	1,00	1,70	4,40	0,35	23,70
FT 1.5	1,50	2,20	5,20	0,35	15,50
FT 2.0	2,00	2,70	5,80	0,35	10,80
FT 2.5	2,50	3,20	6,50	0,35	8,40
FT 3.0	3,00	3,70	7,30	0,35	6,00
FT 3.5	3,50	4,20	8,20	0,35	4,70
FT 4.0	4,00	4,70	9,20	0,35	3,70
FT 5.0	5,00	5,70	10,15	0,35	2,60



OVAL TAGS - 1 HOLE



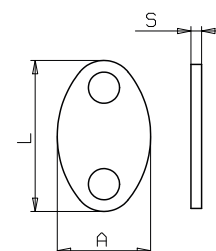
FO	L mm	A mm	S mm	Weight AG 925 (Pcs/Gr)
FO 4.0	6,47	4,00	0,50	10,40



OVAL TAGS - 2 HOLES



FO	L mm	A mm	S mm	Weight AG 925 (Pcs/Gr)
FO 3.0	4,85	3,00	0,50	20,40
FO 4.0	6,47	4,00	0,50	11,40
FO 7.0	10,00	7,00	0,50	4,40

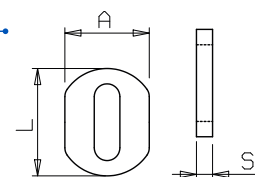


QUALITY TAGS

QUALITY TAGS MB 4.0



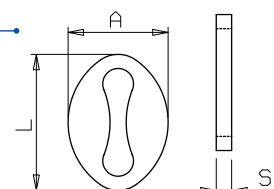
MB	L mm	A mm	S mm	Weight AG 925 (Pcs/Gr)
MB 4.0	4,20	3,30	0,50	21,30



QUALITY TAGS MB 5.0 - MB 6.0



MB	L mm	A mm	S mm	Weight AG 925 (Pcs/Gr)
MB 5.0	5,40	3,90	0,60	12,50
MB 6.0	6,50	4,50	0,60	9,10

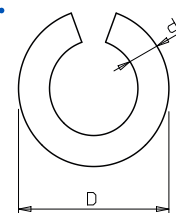


JUMP RINGS

JUMP RINGS



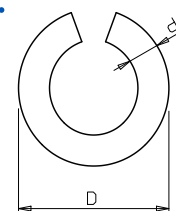
d (wire) x D	Weight AG 925 (Pcs/Gr)
0,60 mm x 2,80 mm	57,00
0,60 mm x 3,00 mm	57,00
0,75 mm x 3,30 mm	33,30
0,80 mm x 3,70 mm	22,00
0,90 mm x 4,40 mm	14,30
0,90 mm x 5,40 mm	12,00
1,00 mm x 5,00 mm	9,10
1,10 mm x 8,20 mm	4,80
1,25 mm x 5,90 mm	5,30
1,30 mm x 4,40 mm	6,80
1,30 mm x 6,70 mm	4,00



SOLDERED JUMP RINGS



d (wire) x D	Weight AG 925 (Pcs/Gr)
0,55 mm x 3,20 mm	50,00
0,60 mm x 4,00 mm	40,00
0,65 mm x 3,40 mm	38,00
0,70 mm x 3,20 mm	33,30
0,90 mm x 4,40 mm	15,40
0,90 mm x 5,40 mm	12,50
1,00 mm x 5,00 mm	11,70
1,00 mm x 6,10 mm	9,10
1,00 mm x 7,00 mm	7,60
1,10 mm x 8,20 mm	5,40
1,25 mm x 5,90 mm	7,10
1,30 mm x 6,70 mm	5,70

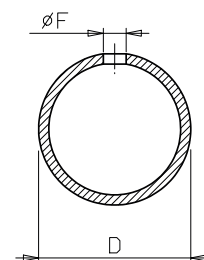


BEADS BY SHEET

STAMPED BEADS - 1 HOLE



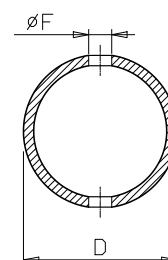
P1F	D mm	∅F mm	Weight AG 925 (Pcs/Gr)
P1F 3.0	3,00	0,90	16,70
P1F 4.0	4,00	0,90	8,90
P1F 5.0	5,00	0,90	4,70
P1F 6.0	6,00	0,90	3,10
P1F 7.0	7,00	0,90	1,90
P1F 8.0	8,00	0,90	1,30
P1F 9.0	9,00	0,90	1,00
P1F 10.0	10,00	0,90	0,70
P1F 12.0	12,00	0,90	0,50



STAMPED BEADS - 2 HOLES

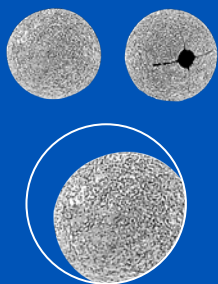


P2F	D mm	∅F mm	Weight AG 925 (Pcs/Gr)
P2F 3.0	3,00	1,20	17,60
P2F 4.0	4,00	1,20/1,40	9,20
P2F 5.0	5,00	1,20/1,40	4,80
P2F 6.0	6,00	1,20/1,40	3,20
P2F 7.0	7,00	1,20/1,40	1,90
P2F 8.0	8,00	1,20/1,40	1,30
P2F 9.0	9,00	1,20/1,40	1,00
P2F 10.0	10,00	1,20/1,40	0,70
P2F 12.0	12,00	1,20/1,40	0,50

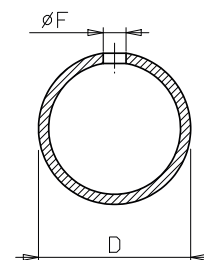


BEADS BY SHEET

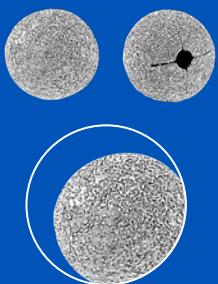
STARDUST STAMPED BEADS - 1 HOLE



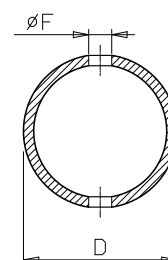
P1FP	D mm	∅F mm	Weight AG 925 (Pcs/Gr)
P1FP 3.0	3,00	0,90	16,80
P1FP 4.0	4,00	0,90	9,00
P1FP 5.0	5,00	0,90	4,70
P1FP 6.0	6,00	0,90	3,10
P1FP 7.0	7,00	0,90	1,90
P1FP 8.0	8,00	0,90	1,30
P1FP 9.0	9,00	0,90	1,00
P1FP 10.0	10,00	0,90	0,70
P1FP 12.0	12,00	0,90	0,50



STARDUST STAMPED BEADS - 2 HOLES



P2FP	D mm	∅F mm	Weight AG 925 (Pcs/Gr)
P2FP 3.0	3,00	1,20	17,90
P2FP 4.0	4,00	1,20/1,40	9,20
P2FP 5.0	5,00	1,20/1,40	4,80
P2FP 6.0	6,00	1,20/1,40	3,20
P2FP 7.0	7,00	1,20/1,40	1,90
P2FP 8.0	8,00	1,20/1,40	1,30
P2FP 9.0	9,00	1,20/1,40	1,00
P2FP 10.0	10,00	1,20/1,40	0,70
P2FP 12.0	12,00	1,20/1,40	0,50

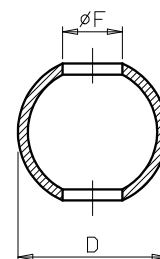


BEADS BY TUBE

SMOOTH BEADS

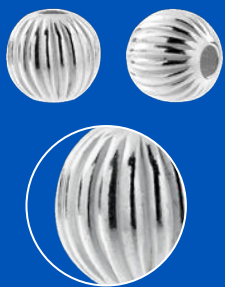


P2L	D mm	øF mm	Weight AG 925 (Pcs/Gr)
P2L 1.8	1,80	0,80	66,70
P2L 2.0	2,00	0,90	47,60
P2L 2.2	2,2	1,00	34,50
P2L 2.5	2,5	0,90	30,30
P2L 2.5	2,5	1,20	31,30
P2L 3.0	3,0	1,00	16,70
P2L 3.0	3,0	1,20	17,20
P2L 3.0	3,0	1,50	18,50
P2L 3.5	3,5	1,60	12,80
P2L 4.0	4,0	1,00	10,10
P2L 4.0	4,0	1,50	10,60
P2L 4.0	4,0	1,80	11,30
P2L 4.5	4,5	1,90	6,90
P2L 5.0	5,0	1,50	5,50
P2L 5.0	5,0	1,80	5,60
P2L 5.0	5,0	2,20	5,70
P2L 6.0	6,0	1,80	2,40
P2L 6.0	6,0	2,40	2,60
P2L 6.0	6,0	3,20	4,70
P2L 7.0	7,0	2,80	1,80
P2L 8.0	8,0	1,40	1,10
P2L 8.0	8,0	3,00	1,20
P2L 9.0	9,0	3,40	0,90
P2L 10.0	10,0	2,20	0,60
P2L 10.0	10,0	2,90	0,70
P2L 10.0	10,0	3,40	0,70
P2L 11.0	11,0	3,90	0,60
P2L 12.0	12,0	2,70	0,50
P2L 12.0	12,0	5,30	0,50
P2L 12.0	12,0	6,70	0,50

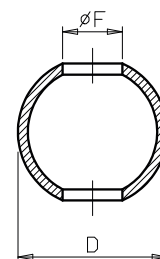


BEADS BY TUBE

CORRUGATED BEADS

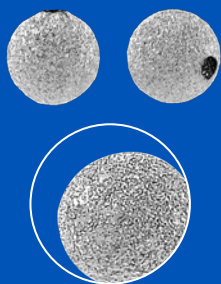


P2R	D mm	∅F mm	Weight AG 925 (Pcs/Gr)
P2R 3.0	3,0	1,00	19,30
P2R 3.0	3,0	1,20	20,00
P2R 3.0	3,0	1,50	19,20
P2R 4.0	4,0	1,00	8,30
P2R 4.0	4,0	1,50	9,00
P2R 5.0	5,0	1,50	4,90
P2R 5.0	5,0	1,80	5,20
P2R 6.0	6,0	1,80	3,30
P2R 6.0	6,0	2,40	3,40
P2R 7.0	7,0	2,80	1,90
P2R 8.0	8,0	3,00	1,40
P2R 9.0	9,0	3,40	1,10
P2R 10.0	10,0	3,40	0,80
P2R 11.0	11,0	3,90	0,60

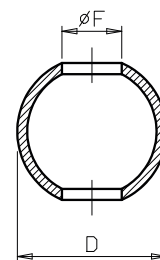


BEADS BY TUBE

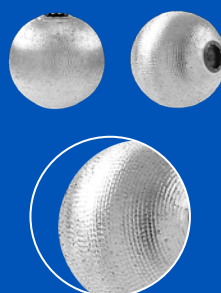
STARDUST BEADS



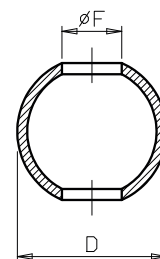
P2P	D mm	∅F mm	Weight AG 925 (Pcs/Gr)
P2P 3.0	3,00	1,00	15,40
P2P 3.0	3,00	1,20	16,80
P2P 3.0	3,00	1,50	18,00
P2P 4.0	4,00	1,00	9,80
P2P 4.0	4,00	1,50	9,90
P2P 4.0	4,00	1,80	10,80
P2P 5.0	5,00	1,50	5,40
P2P 5.0	5,00	1,80	5,50
P2P 5.0	5,00	2,20	5,70
P2P 6.0	6,00	1,80	2,50
P2P 6.0	6,00	2,40	2,60
P2P 6.0	6,00	3,20	4,70
P2P 7.0	7,00	2,80	1,70
P2P 8.0	8,00	1,40	1,10
P2P 8.0	8,00	3,00	1,20
P2P 9.0	9,00	3,40	0,90
P2P 10.0	10,00	2,20	0,70
P2P 10.0	10,00	3,40	0,70
P2P 12.0	12,00	2,70	0,50
P2P 12.0	12,00	5,30	0,50
P2P 12.0	12,00	6,70	0,50



SATIN BEADS

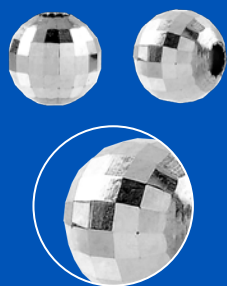


P2S	D mm	∅F mm	Weight AG 925 (Pcs/Gr)
P2S 5.0	5,00	2,20	5,80
P2S 6.0	6,00	1,80	2,50
P2S 6.0	6,00	2,40	2,60
P2S 7.0	7,00	2,80	1,60
P2S 8.0	8,00	1,40	1,10
P2S 10.0	10,00	3,40	0,70

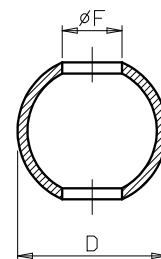


BEADS BY TUBE

DIAMOND CUT BEADS - DISCO



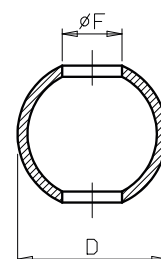
P2D	D mm	øF mm	Number of lines	Degree	Weight AG 925 (Pcs/Gr)
P2D 2.5 - disco	2,50	1,20	3	180°	31,25
P2D 3.0 - disco	3,00	1,20	3	180°	18,86
P2D 3.0 - disco	3,00	1,50	3	180°	21,05
P2D 4.0 - disco	4,00	1,50	3	180°	11,60
P2D 4.0 - disco	4,00	1,80	3	180°	11,80
P2D 5.0 - disco	5,00	1,50	5	180°	6,60
P2D 5.0 - disco	5,00	1,80	5	180°	6,00
P2D 5.0 - disco	5,00	2,20	5	180°	6,70
P2D 6.0 - disco	6,00	1,80	5	180°	2,80
P2D 6.0 - disco	6,00	2,40	5	180°	3,10
P2D 8.0 - disco	8,00	1,40	5	180°	1,30
P2D 8.0 - disco	8,00	3,00	5	180°	1,60
P2D 10.0 - disco	10,00	2,20	5	180°	0,70



DIAMOND CUT BEADS - DIAGONAL / SLASH



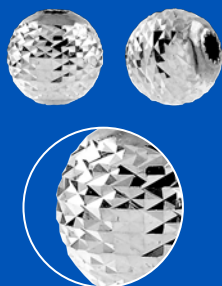
P2D	D mm	øF mm	Number of lines	Degree	Weight AG 925 (Pcs/Gr)
P2D 2.5 - diago	2,50	1,20	3	130°	37,30
P2D 3.0 - diago	3,00	1,20	3	130°	21,70
P2D 3.0 - diago	3,00	1,50	3	130°	23,80
P2D 4.0 - diago	4,00	1,50	3	150°	13,50
P2D 4.0 - diago	4,00	1,80	3	150°	12,70
P2D 5.0 - diago	5,00	1,50	3	150°	7,30
P2D 5.0 - diago	5,00	2,20	3	150°	7,50
P2D 6.0 - diago	6,00	1,80	3	150°	3,10
P2D 6.0 - diago	6,00	2,40	3	150°	3,40
P2D 8.0 - diago	8,00	1,40	7	150°	1,30
P2D 8.0 - diago	8,00	3,00	7	150°	1,40
P2D 10.0 - diago	10,00	2,20	7	150°	0,80
P2D 12.0 - diago	12,00	2,70	7	150°	0,60



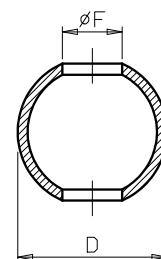
The number of lines refers to the number of diamond cut lines. The degrees refer to the diamond's cutting angle.

BEADS BY TUBE

DIAMOND CUT BEADS - CROSS CUT



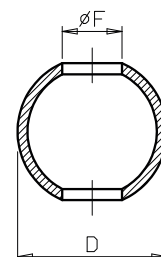
P2D	D mm	øF mm	Number of lines	Degree	Weight AG 925 (Pcs/Gr)
P2D 4.0 - cross	4,00	1,80	5+5	150°	12,90



DIAMOND CUT BEADS - EAR CUT



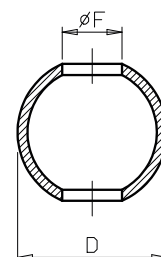
P2D	D mm	øF mm	Number of lines	Degree	Weight AG 925 (Pcs/Gr)
P2D 3.0 - ear	3,00	1,50	2	130°	24,00
P2D 4.0 - ear	4,00	1,50	2	130°	13,30
P2D 5.0 - ear	5,00	1,50	2	130°	7,60
P2D 5.0 - ear	5,00	1,80	2	130°	7,30
P2D 5.0 - ear	5,00	2,20	2	130°	8,00



DIAMOND CUT BEADS - RAINBOW CUT



P2D	D mm	øF mm	Number of lines	Number of faces	Weight AG 925 (Pcs/Gr)
P2D 3.0 - rainbow	3,00	1,50	1	18	22,60
P2D 4.0 - rainbow	4,00	1,50	1	18	12,60
P2D 5.0 - rainbow	5,00	1,80	1	20	7,00



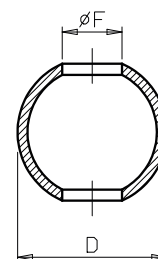
The number of lines refers to the number of diamond cut lines. The degrees refer to the diamond's cutting angle.

BEADS BY TUBE

SMOOTH LIGHT BEADS

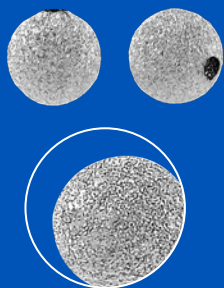


P2L LIGHT	D mm	øF mm	Weight AG 925 (Pcs/Gr)
P2L 3.0 light	3,00	0,80	28,60
P2L 4.0 light	4,00	1,20	13,50
P2L 5.0 light	5,00	1,30	7,10
P2L 5.0 light	5,00	1,60	7,40
P2L 6.0 light	6,00	1,40	4,20
P2L 6.0 light	6,00	1,60	4,60
P2L 7.0 light	7,00	1,70	3,10
P2L 8.0 light	8,00	1,60	1,70
P2L 8.0 light	8,00	1,80	2,20
P2L 9.0 light	9,00	1,50	1,20
P2L 10.0 light	10,00	1,80	1,15
P2L 10.0 light	10,00	2,60	1,10
P2L 10.0 light	10,00	2,80	1,30
P2L 10.0 light	10,00	2,90	1,10
P2L 10.0 light	10,00	3,00	1,30
P2L 11.0 light	11,00	2,70	0,80
P2L 12.0 light	12,00	3,10	0,70

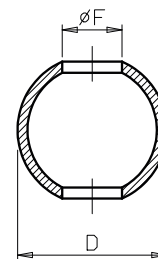


BEADS BY TUBE

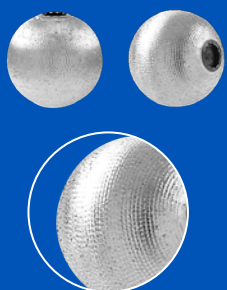
STARDUST LIGHT BEADS



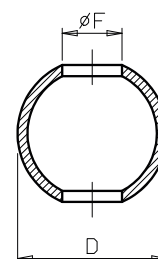
P2P LIGHT	D mm	∅F mm	Weight AG 925 (Pcs/Gr)
P2P 3.0 light	3,00	0,80	26,30
P2P 4.0 light	4,00	1,20	13,30
P2P 5.0 light	5,00	1,30	7,50
P2P 5.0 light	5,00	1,60	7,80
P2P 6.0 light	6,00	1,40	4,30
P2P 6.0 light	6,00	1,60	2,20
P2P 7.0 light	7,00	1,70	3,20
P2P 8.0 light	8,00	1,60	1,70
P2P 8.0 light	8,00	1,80	2,30
P2P 9.0 light	9,00	1,50	1,20
P2P 10.0 light	10,00	1,80	1,20
P2P 10.0 light	10,00	2,60	1,05
P2P 10.0 light	10,00	2,90	1,10
P2P 10.0 light	10,00	3,00	1,30
P2P 11.0 light	11,00	2,70	0,90
P2P 12.0 light	12,00	3,10	0,70



SATIN LIGHT BEADS



P2S LIGHT	D mm	∅F mm	Weight AG 925 (Pcs/Gr)
P2S 4.0 light	4,00	1,20	14,20
P2S 10.0 light	10,00	1,80	1,20

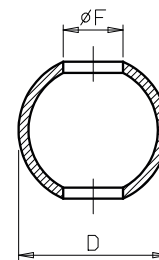


BEADS BY TUBE

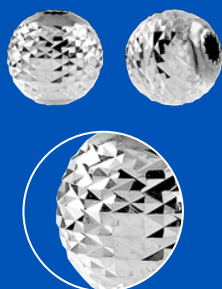
DIAMOND CUT LIGHT BEADS - DIAGONAL / SLASH



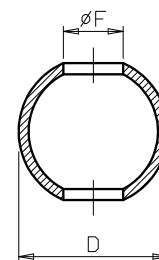
P2D LIGHT	D mm	∅F mm	Number of lines	Degrease	Weight AG 925 (Pcs/Gr)
P2D 4.0 light - diago	4,00	1,20	3	150°	18,20
P2D 5.0 light - diago	5,00	1,30	5	130°	9,20
P2D 5.0 light - diago	5,00	1,60	5	130°	9,20
P2D 6.0 light - diago	6,00	1,40	6	130°	5,90
P2D 6.0 light - diago	6,00	1,60	6	130°	5,20
P2D 8.0 light - diago	8,00	1,60	7	150°	2,00
P2D 10.0 light - diago	10,00	1,80	7	150°	1,80
P2D 10.0 light - diago	10,00	3,00	7	150°	1,60
P2D 12.0 light - diago	12,00	3,10	7	150°	0,90



DIAMOND CUT LIGHT BEADS - CROSS



P2D LIGHT	D mm	∅F mm	Number of lines	Degrease	Weight AG 925 (Pcs/Gr)
P2D 4.0 light - cross	4,00	1,20	5+5	150°	16,70
P2D 5.0 light - cross	5,00	1,60	6+6	150°	10,40
P2D 6.0 light - cross	6,00	1,60	6+6	150°	5,30
P2D 8.0 light - cross	8,00	1,60	7+7	150°	2,10
P2D 10.0 light - cross	10,00	1,80	7+7	150°	1,50



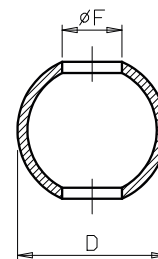
The number of lines refers to the number of diamond cut lines. The degrees refer to the diamond's cutting angle.

BEADS BY TUBE

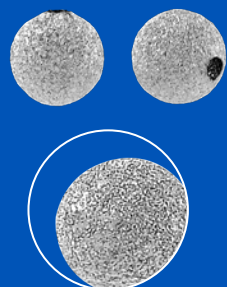
SMOOTH SUPERLIGHT BEADS



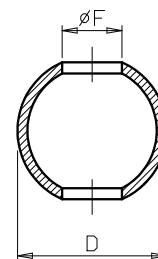
P2L SL	D mm	øF mm	Weight AG 925 (Pcs/Gr)
P2L 5.0 Superlight	5,00	1,90	14,20
P2L 6.0 Superlight	6,00	2,00	10,00
P2L 7.0 Superlight	7,00	1,20	4,85
P2L 8.0 Superlight	8,00	1,80	3,55
P2L 9.0 Superlight	9,00	2,30	2,15
P2L 10.0 Superlight	10,00	2,50	1,85
P2L 12.0 Superlight	12,00	3,00	1,30



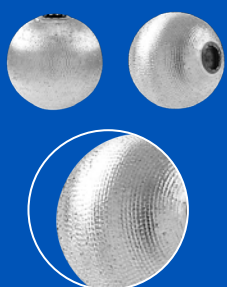
STARDUST SUPERLIGHT BEADS



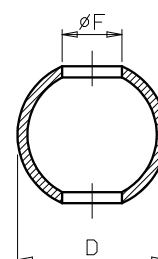
P2P SL	D mm	øF mm	Weight AG 925 (Pcs/Gr)
P2P 5.0 Superlight	5,00	1,90	13,30
P2P 6.0 Superlight	6,00	2,00	9,30
P2P 7.0 Superlight	7,00	1,20	4,90
P2P 8.0 Superlight	8,00	1,80	3,80
P2P 9.0 Superlight	9,00	2,30	2,15
P2P 10.0 Superlight	10,00	2,50	1,85
P2P 12.0 Superlight	12,00	3,00	1,25



SATIN SUPERLIGHT BEADS



P2S SL	D mm	øF mm	Weight AG 925 (Pcs/Gr)
P2S 5.0 Superlight	5,00	1,90	13,80
P2S 6.0 Superlight	6,00	2,00	9,80
P2S 7.0 Superlight	7,00	1,20	5,30
P2S 8.0 Superlight	8,00	1,80	3,85
P2S 9.0 Superlight	9,00	2,30	2,30
P2S 10.0 Superlight	10,00	2,50	1,90
P2S 12.0 Superlight	12,00	3,00	1,30

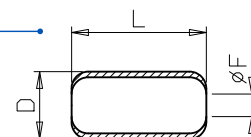


CYLINDERS

SMOOTH CYLINDERS



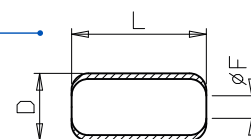
CL	D mm	L mm	∅F mm	Weight AG 925 (Pcs/Gr)
CL 3.0	3,00	6,00	1,30	8,30
CL 4.0	4,00	8,00	1,80	4,20
CL 5.0	5,00	10,00	2,50	2,60
CL 6.0	6,00	12,00	3,20	1,20



DIAMOND CUT CYLINDERS



CD	D mm	L mm	∅F mm	Number of lines	Degree	Weight AG 925 (Pcs/Gr)
CD 3.0 diago	3,00	6,00	1,30	5	130°	10,60
CD 4.0 diago	4,00	8,00	1,80	5	130°	7,00
CD 5.0 diago	5,00	10,00	2,50	5	130°	3,55



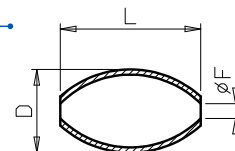
The number of lines refers to the number of diamond cut lines. The degrees refer to the diamond's cutting angle.

OVAL BEADS

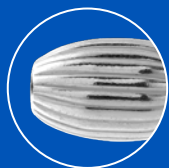
SMOOTH OVALS



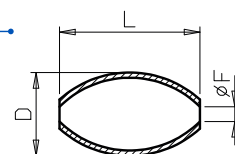
OVL	D mm	L mm	ØF mm	Weight AG 925 (Pcs/Gr)
OVL 3.0	3,00	4,50	1,20	10,40
OVL 4.0	4,00	6,70	1,30	5,80
OVL 5.0	5,00	8,00	2,10	3,30
OVL 6.0	6,00	10,20	1,80	1,40
OVL 7.0	7,00	11,80	2,00	1,00
OVL 8.0	8,00	13,50	2,10	0,70
OVL 10.0	10,00	17,00	2,50	0,40



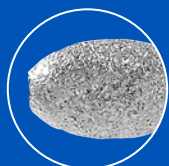
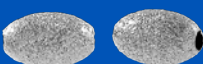
CORRUGATED OVALS



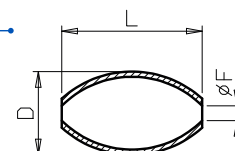
OVR	D mm	L mm	ØF mm	Weight AG 925 (Pcs/Gr)
OVR 3.0	3,00	4,50	1,20	12,70
OVR 4.0	4,00	6,70	1,30	4,70
OVR 5.0	5,00	8,00	2,10	3,00
OVR 6.0	6,00	10,20	1,80	1,90
OVR 7.0	7,00	11,80	2,00	1,00
OVR 8.0	8,00	13,50	2,10	0,80



STARDUST OVALS

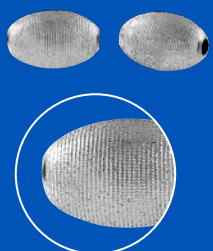


OVP	D mm	L mm	ØF mm	Weight AG 925 (Pcs/Gr)
OVP 3.0	3,00	4,50	1,20	10,40
OVP 4.0	4,00	6,70	1,30	5,80
OVP 5.0	5,00	8,00	2,10	3,30
OVP 6.0	6,00	10,20	1,80	1,40
OVP 7.0	7,00	11,80	2,00	1,00
OVP 8.0	8,00	13,50	2,10	0,70
OVP 10.0	10,00	17,00	2,50	0,40

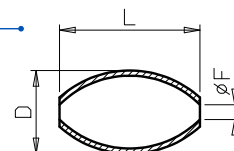


OVAL BEADS

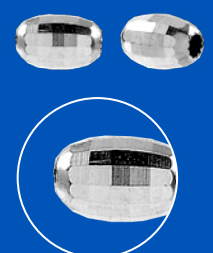
SATIN OVALS



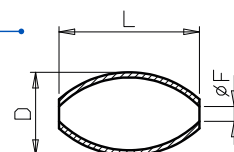
OVS	D mm	L mm	ØF mm	Weight AG 925 (Pcs/Gr)
OVS 4.0	4,00	4,00	1,30	5,70
OVS 5.0	5,00	8,00	2,10	3,20
OVS 6.0	6,00	10,20	1,80	1,35
OVS 8.0	8,00	13,50	2,10	0,65



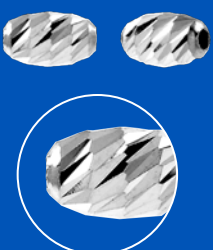
DIAMOND CUT OVALS - DISCO



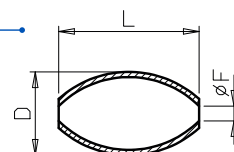
OVD	D mm	L mm	ØF mm	Number of lines	Degree	Weight AG 925 (Pcs/Gr)
OVD 3.0 disco	3,00	4,50	1,20	5	180°	12,35
OVD 4.0 disco	4,00	6,70	1,30	7	180°	7,10
OVD 5.0 disco	5,00	8,00	2,10	7	180°	3,80
OVD 6.0 disco	6,00	10,20	1,80	7	180°	1,55



DIAMOND CUT OVALS - DIAGONAL / SLASH



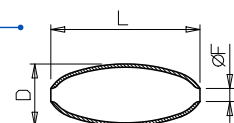
OVD	D mm	L mm	ØF mm	Number of lines	Degree	Weight AG 925 (Pcs/Gr)
OVD 3.0 diago	3,00	4,50	1,20	4	130°	14,70
OVD 4.0 diago	4,00	6,70	1,30	4	130°	9,90
OVD 5.0 diago	5,00	8,00	2,10	4	130°	4,20
OVD 6.0 diago	6,00	10,20	1,80	5	130°	1,90



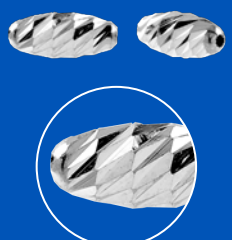
SMOOTH LONG OVALS



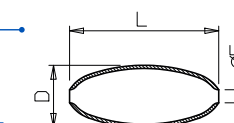
OVL long	D mm	L mm	ØF mm	Weight AG 925 (Pcs/Gr)
OVL 4.0 long	4,00	9,60	1,00	3,70
OVL 5.0 long	5,00	12,00	1,40	2,10
OVL 6.0 long	6,00	14,50	1,20	1,70



DIAMOND CUT LONG OVALS - DIAGONAL / SLASH



OVD LONG DIAGONAL	D mm	L mm	ØF mm	Number of lines	Degree	Weight AG 925 (Pcs/Gr)
OVD 4.0 long - diago	4,00	9,60	1,00	5	130°	5,45
OVD 5.0 long - diago	5,00	12,00	1,40	10	130°	3,40



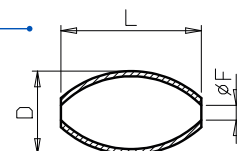
The number of lines refers to the number of diamond cut lines. The degrees refer to the diamond's cutting angle.

OVAL BEADS

SMOOTH LIGHT OVALS



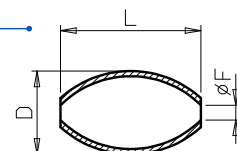
OVL LIGHT	D mm	L mm	ØF mm	Weight AG 925 (Pcs/Gr)
OVL 8.0 light	8,00	12,00	1,60	1,00



STARDUST LIGHT OVALS



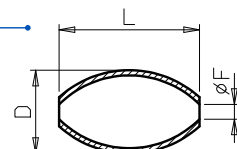
OVP LIGHT	D mm	L mm	ØF mm	Weight AG 925 (Pcs/Gr)
OVP 8.0 leggera	8,00	12,00	1,60	1,00



SATIN LIGHT OVALS



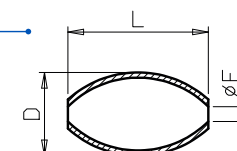
OVS LIGHT	D mm	L mm	ØF mm	Weight AG 925 (Pcs/Gr)
OVS 8.0 light	8,00	12,00	1,60	1,00



DIAMOND CUT LIGHT OVALS - DISCO



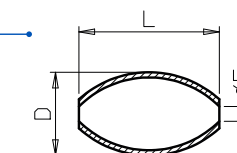
OVD LIGHT	D mm	L mm	ØF mm	Number of lines	Degree	Weight AG 925 (Pcs/Gr)
OVD 8.0 light - disco	8,00	12,00	1,60	9	180°	1,25



DIAMOND CUT LIGHT OVALS - DIAGONAL / SLASH



OVD LIGHT	D mm	L mm	ØF mm	Number of lines	Degree	Weight AG 925 (Pcs/Gr)
OVD 8.0 light - diago	8,00	12,00	1,60	7	130°	1,65



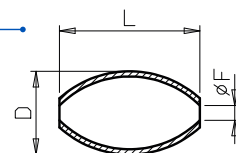
The number of lines refers to the number of diamond cut lines. The degrees refer to the diamond's cutting angle.

OVAL BEADS

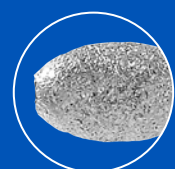
SMOOTH SUPERLIGHT OVALS



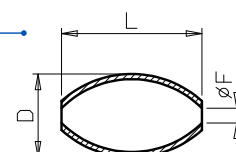
OVL SL	D mm	L mm	ØF mm	Weight AG 925 (Pcs/Gr)
OVL 5.0 Superlight	5,00	8,00	1,40	7,20
OVL 6.0 Superlight	6,00	10,20	1,50	5,20
OVL 8.0 Superlight	8,00	13,50	1,40	2,30
OVL 10.0 Superlight	10,00	17,00	2,00	1,00



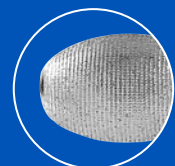
STARDUST SUPERLIGHT OVALS



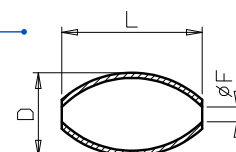
OVP SL	D mm	L mm	ØF mm	Weight AG 925 (Pcs/Gr)
OVP 5.0 Superlight	5,00	8,00	1,40	7,10
OVP 6.0 Superlight	6,00	10,20	1,50	5,20
OVP 8.0 Superlight	8,00	13,50	1,40	2,30
OVP 10.0 Superlight	10,00	17,00	2,00	1,00



SATIN SUPERLIGHT OVALS



OVS SL	D mm	L mm	ØF mm	Weight AG 925 (Pcs/Gr)
OVS 5.0 Superlight	5,00	8,00	1,40	7,10
OVS 6.0 Superlight	6,00	10,20	1,50	5,30
OVS 8.0 Superlight	8,00	13,50	1,40	2,40
OVS 10.0 Superlight	10,00	17,00	2,00	1,10

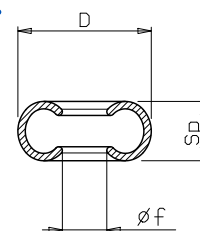


SMOOTH ROUNDEL BEADS

SMOOTH ROUNDEL BEADS



COL	D mm	Sp mm	f mm	Weight AG 925 (Pcs/Gr)
COL 3.0	3,35	1,60	0,90	16,95
COL 3.0	3,35	1,60	1,20	14,30
COL 4.0	4,50	2,00	1,10	9,60
COL 5.0	5,55	2,47	1,60	5,30
COL 6.0	6,72	3,19	1,60	2,45
COL 7.0	8,00	3,35	2,30	1,70
COL 8.0	9,05	4,00	2,70	1,20

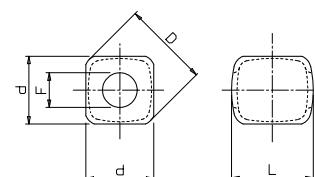


DIAMOND CUBES

DIAMOND CUBES

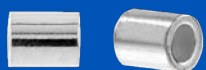


CUBD	d mm	F mm	D mm	L mm	Weight AG 925 (Pcs/Gr)
CUBD 3.0	2,80	1,50	3,50	3,20	17,00



CRIMP TUBES

CRIMP TUBES



CRIMP TUBES	D mm	L mm	Weight AG 925 (Pcs/Gr) L. 1 mm)
CRIMP TUBES 1.0	1,00	from 1 mm to 15 mm	200
CRIMP TUBES 1.5	1,50	from 1 mm to 15 mm	120
CRIMP TUBES 2.0	2,00	from 1 mm to 15 mm	65
CRIMP TUBES 2.2	2,20	from 1 mm to 15 mm	55
CRIMP TUBES 2.5	2,50	from 1 mm to 15 mm	40
CRIMP TUBES 3.0	3,00	from 1 mm to 15 mm	30

