



GOLD Findings Catalogue

Carats: 917, 875, 750, 585, 417, 375, 333



GOLD Findings Catalogue

Carats: 917, 875, 750, 585, 417, 375, 333

<u>SPRING RINGS</u>	pag. 5
<u>LOBSTER CLAWS</u>	pag. 7
<u>TRIGGER CLASPS</u>	pag. 9
<u>END CAPS</u>	pag. 10
<u>QUALITY TAGS</u>	pag. 12
<u>JUMP RINGS</u>	pag. 12
<u>BEADS BY SHEET</u>	pag. 13
<u>BEADS BY TUBE</u>	pag. 14
<u>CYLINDERS</u>	pag. 20
<u>OVAL BEADS</u>	pag. 21

ITAM S.p.A. reserves the right to remove items from production and to change the prices and the orders with no notice. We do not accept claims after 3 days from date of receipt of the order. No returns will be accepted without ITAM authorization.

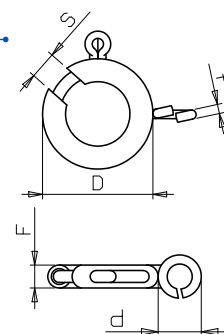
Arezzo Court is acknowledged for any controversy.

SPRING RINGS

STANDARD TYPE SPRING RINGS - OPEN TOP



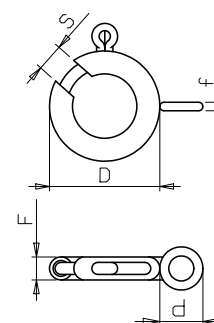
AMTNMA	D mm	F mm	d mm	f mm	s mm	Weight AU 750 (Pcs/Gr)
AMTNMA 5.0	5,10	1,30	3,00	0,70	0,80	6,00
AMTNMA 5.5	5,50	1,35	3,00	0,70	0,80	5,30
AMTNMA 5.9	6,10	1,50	3,10	0,75	1,10	4,00
AMTNMA 7.0	7,10	1,70	3,50	0,85	1,40	2,70
AMTNMA 8.0	8,20	1,90	4,00	1,00	2,10	1,70



STANDARD TYPE SPRING RINGS - CLOSED TOP



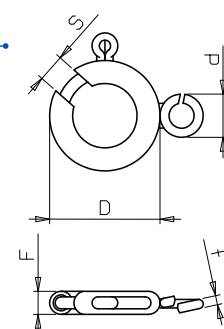
AMTNMC	D mm	F mm	d mm	f mm	s mm	Weight AU 750 (Pcs/Gr)
AMTNMC 5.0	5,10	1,30	3,00	0,70	0,80	6,00
AMTNMC 5.5	5,50	1,35	3,00	0,70	0,80	5,30
AMTNMC 5.9	6,10	1,50	3,10	0,75	1,10	4,00



STANDARD TYPE SPRING RINGS - FLAT TOP



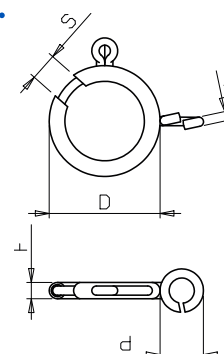
AMTNMP	D mm	F mm	d mm	f mm	s mm	Weight AU 750 (Pcs/Gr)
AMTNMP 5.0	5,10	1,30	3,00	0,70	0,80	6,00
AMTNMP 5.5	5,50	1,35	3,00	0,70	0,80	5,30



LIGHT TYPE SPRING RINGS - OPEN TOP



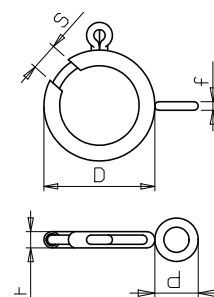
AMTLMA	D mm	F mm	d mm	f mm	s mm	Weight AU 750 (Pcs/Gr)
AMTLMA 4.5	4,60	1,00	2,10	0,50	0,40	12,10
AMTLMA 5.0	4,90	1,05	2,30	0,50	0,80	10,40
AMTLMA 5.5	5,40	1,20	2,40	0,55	0,90	7,20
AMTLMA 5.9	5,90	1,25	3,00	0,70	1,10	5,40
AMTLMA 7.0	6,90	1,40	3,10	0,75	1,30	3,40



LIGHT TYPE SPRING RINGS - CLOSED TOP



AMTLMC	D mm	F mm	d mm	f mm	s mm	Weight AU 750 (Pcs/Gr)
AMTLMC 5.0	4,90	1,05	2,30	0,50	0,90	10,40
AMTLMC 5.5	5,40	1,20	2,40	0,55	0,90	7,20
AMTLMC 5.9	5,90	1,25	3,00	0,70	1,10	5,40

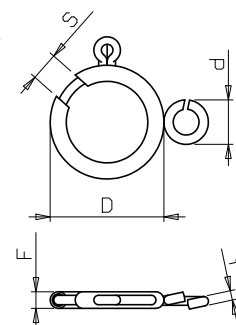


SPRING RINGS

LIGHT TYPE SPRING RINGS - FLAT TOP



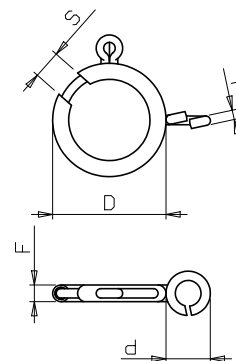
AMTLMP	D mm	F mm	d mm	f mm	s mm	Weight AU 750 (Pcs/Gr)
AMTLMP 4.5	4,60	1,00	2,10	0,50	0,80	12,10
AMTLMP 5.0	4,90	1,05	3,00	0,70	0,90	8,10
AMTLMP 5.9	5,90	1,25	3,00	0,70	1,10	5,40



SUPERLIGHT TYPE SPRING RINGS - OPEN TOP



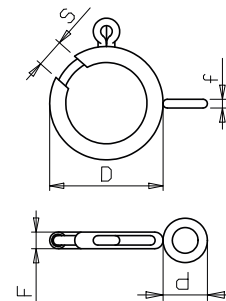
AMTSLMA	D mm	F mm	d mm	f mm	s mm	Weight AU 750 (Pcs/Gr)
AMTSLMA 4.0	3,90	0,90	2,10	0,40	0,70	20,70
AMTSLMA CINA 4.5	4,40	0,90	2,60	0,50	0,80	15,40
AMTSLMA 5.0	4,80	0,95	2,30	0,50	0,90	13,20
AMTSLMA CINA 5.0	4,80	0,95	2,80	0,60	0,90	11,10
AMTSLMA 5.5	5,50	1,05	2,30	0,50	0,90	11,00
AMTSLMA CINA 5.5	5,50	1,05	3,00	0,60	0,90	10,00



SUPERLIGHT TYPE SPRING RINGS - CLOSED TOP



AMTSLMC	D mm	F mm	d mm	f mm	s mm	Weight AU 750 (Pcs/Gr)
AMTSLMC 4.0	3,90	0,90	1,90	0,40	0,70	21,50
AMTSLMC 4.5	4,40	0,90	1,90	0,40	0,80	18,00
AMTSLMC 5.0	4,80	0,95	2,30	0,50	0,80	13,20
AMTSLMC 5.5	5,50	1,05	2,30	0,50	0,90	11,00

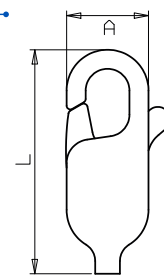


LOBSTER CLAWS

LOBSTER CLAWS WITHOUT RING



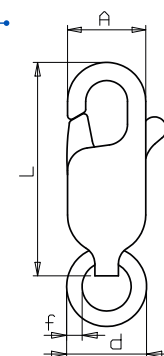
CHR	A mm	L mm	Weight AU 750 (Pcs/Gr)
CHR 7.0	2,80	7,20	3,70
CHR 8.0	3,30	8,30	2,90
CHR 9.0	3,85	10,20	1,70
CHR 11.0	4,30	11,75	1,20
CHR 13.0	5,25	13,85	0,80
CHR 16.0	6,20	15,95	0,50
CHR 18.0	9,00	18,10	0,30



LOBSTER CLAWS WITH RING



CHR CM	A mm	L mm	f x d mm	Weight AU 750 (Pcs/Gr)
CHR CM 7.0	2,80	7,20	0,60X2,60	3,40
CHR CM 8.0	3,30	8,30	0,75X3,60	2,40
CHR CM 9.0	3,85	10,20	0,80X4,00	1,50
CHR CM 11.0	4,30	11,75	0,90X4,60	1,10
CHR CM 13.0	5,25	13,85	1,00X5,20	0,70
CHR CM 16.0	6,20	15,95	1,25X5,90	0,40
CHR CM 18.0	9,00	18,10	1,30X6,70	0,25

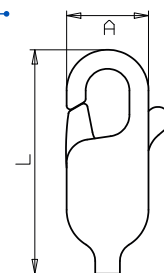


LOBSTER CLAWS

LIGHT LOBSTER CLAWS WITHOUT RING



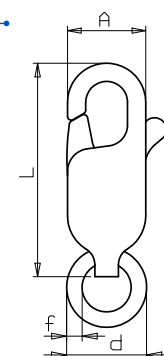
CHRL	A mm	L mm	Weight AU 750 (Pcs/Gr)
CHRL 7.0	2,80	7,20	4,50
CHRL 8.0	3,30	8,30	3,30
CHRL 9.0	3,85	10,20	2,20
CHRL 11.0	4,30	11,75	1,70
CHRL 13.0	5,25	13,85	1,10
CHRL 16.0	6,20	15,95	0,60



LIGHT LOBSTER CLAWS WITH RING



CHRL	A mm	L mm	f x d mm	Weight AU 750 (Pcs/Gr)
CHRL CM 7.0	2,80	7,20	0,60X2,60	3,90
CHRL CM 8.0	3,30	8,30	0,75X3,60	2,70
CHRL CM 9.0	3,85	10,20	0,80X4,00	1,90
CHRL CM 11.0	4,30	11,75	0,90X4,60	1,40
CHRL CM 13.0	5,25	13,85	1,00X5,20	0,90
CHRL CM 16.0	6,20	15,95	1,25X5,90	0,50

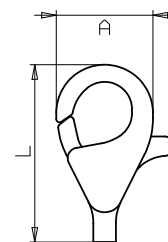


TRIGGER CLASPS

TRIGGER CLASPS WITHOUT RING



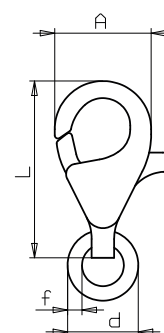
CHP		A mm	L mm	Weight AU 750 (Pcs/Gr)
CHP 7.0		4,00	7,30	4,76
CHP 8.0		4,50	8,30	2,60
CHP 9.0		5,00	9,20	1,90
CHP 11.0		6,00	11,00	1,30
CHP 13.0		7,00	13,00	0,80
CHP 16.0		8,50	16,00	0,50



TRIGGER CLASPS WITH RING



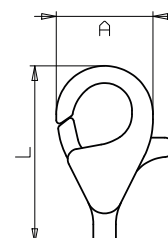
CHP CM		A mm	L mm	f x d mm	Weight AU 750 (Pcs/Gr)
CHP CM 8.0		4,50	8,30	0,75x3,60	2,30
CHP CM 9.0		5,00	9,20	0,80x4,00	1,80
CHP CM 11.0		6,00	11,00	0,90x4,60	1,10
CHP CM 13.0		7,00	13,00	1,00x5,20	0,75
CHP CM 16.0		8,50	16,00	1,25x5,90	0,45



LIGHT TRIGGER CLASPS WITHOUT RING



CHPL		A mm	L mm	Weight AU 750 (Pcs/Gr)
CHPL 8.0		4,50	8,30	3,00
CHPL 9.0		5,00	9,20	2,40
CHPL 11.0		6,00	11,00	1,45

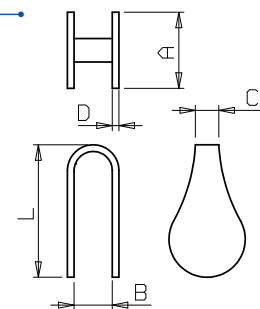


END CAPS

FLAT END CAPS



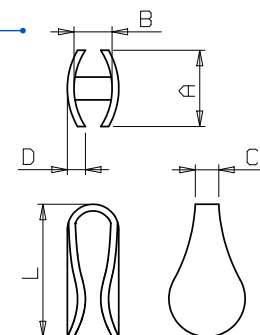
FP	A mm	B mm	C mm	D mm	L mm	Weight AU 750 (Pcs/Gr)
FP 1.0	1,00	1,80	0,70	0,35	5,30	21,30
FP 1.5	1,50	1,80	0,80	0,35	5,30	15,50
FP 2.0	2,00	2,00	0,80	0,35	5,50	11,70
FP 2.5	2,50	2,00	0,95	0,35	5,70	9,20
FP 3.0	3,00	2,00	1,00	0,35	6,00	7,30
FP 3.5	3,50	2,00	1,25	0,35	6,50	5,90
FP 4.0	4,00	2,00	1,20	0,35	7,00	4,90
FP 5.0	4,70	2,20	1,30	0,35	8,00	3,80
FP 6.0	5,80	2,20	1,50	0,35	8,50	2,90
FP 7.0	7,00	2,40	1,50	0,35	8,50	2,40
FP 8.0	8,00	2,40	1,50	0,35	9,00	1,90
FP 9.0	9,00	2,40	1,50	0,35	9,00	1,80
FP 10.0	10,00	2,60	1,80	0,35	9,50	1,50
FP 11.0	11,00	2,60	2,00	0,35	9,50	1,30



CONVEX END CAPS



FB	A mm	B mm	C mm	D mm	L mm	Weight AU 750 (Pcs/Gr)
FB 2.5	2,50	2,00	0,95	0,75	5,70	10,30
FB 3.0	3,00	2,00	1,00	0,82	6,00	7,70
FB 3.5	3,50	2,00	1,25	0,85	6,50	5,90
FB 4.0	4,00	2,00	1,20	0,95	6,95	4,80
FB 5.0	4,70	2,20	1,30	1,00	7,90	3,60
FB 6.0	5,80	2,30	1,50	1,15	8,40	2,90
FB 7.0	7,00	2,40	1,50	1,35	8,40	2,40

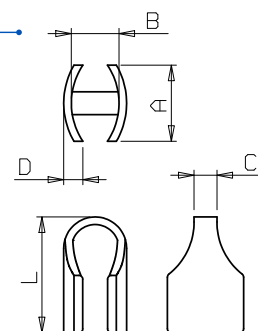


END CAPS

RECTANGULAR CONVEX END CAPS



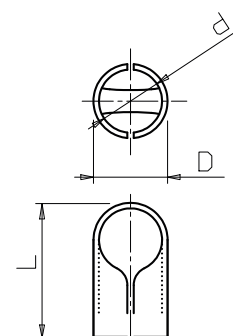
FBR	A mm	B mm	C mm	D mm	L mm	Weight AU 750 (Pcs/Gr)
FBR 3.5	3,50	2,00	1,10	0,90	5,85	6,10
FBR 4.0	4,00	2,50	1,20	0,95	6,05	4,70
FBR 5.0	5,00	2,50	1,30	1,10	7,60	3,60
FBR 6.0	6,00	3,00	1,40	1,25	7,60	3,00
FBR 7.0	7,00	3,00	1,50	1,35	7,60	2,60
FBR 8.0	8,00	3,00	1,50	1,35	7,60	2,30
FBR 10.0	10,00	3,00	1,50	1,35	7,60	1,90
FBR 12.0	12,00	3,00	1,50	1,35	7,60	1,70
FBR 15.0	15,00	3,00	1,50	1,35	7,60	1,40



ROUND END CAPS



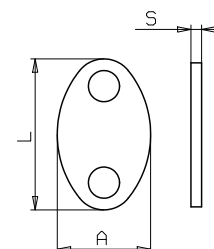
FT	d mm	D mm	L mm	A mm	Weight AU 750 (Pcs/Gr)
FT 1.0	1,00	1,70	4,40	0,35	15,90
FT 1.5	1,50	2,20	5,20	0,35	10,40
FT 2.0	2,00	2,70	5,80	0,35	7,50
FT 2.5	2,50	3,20	6,50	0,35	5,30
FT 3.0	3,00	3,70	7,30	0,35	4,10
FT 3.5	3,50	4,20	8,20	0,35	3,20
FT 4.0	4,00	4,70	9,20	0,35	3,00
FT 5.0	5,00	5,70	10,15	0,35	1,70



OVAL TAGS



FO	L mm	A mm	S mm	Weight AU 750 (Pcs/Gr)
FO 4.0	6,47	4,00	0,50	7,40

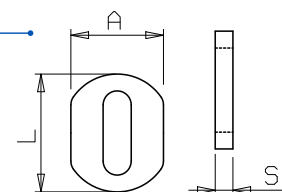


QUALITY TAGS

QUALITY TAGS MB 4.0



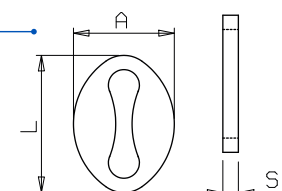
MB	L mm	A mm	S mm	Weight AU 750 (Pcs/Gr)
MB 4.0	4,20	3,30	0,50	16,90



QUALITY TAGS MB 5.0



MB	L mm	A mm	S mm	Weight AU 750 (Pcs/Gr)
MB 5.0	5,40	3,90	0,60	9,00

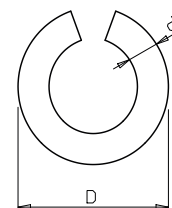


JUMP RINGS

JUMP RINGS



d (wire) x D	Weight AU 750 (Pcs/Gr)
0,60 mm x 2,80 mm	34,50
0,75 mm x 3,30 mm	18,90
0,80 mm x 3,70 mm	14,10
0,90 mm x 4,40 mm	9,20
1,00 mm x 5,00 mm	6,60
1,25 mm x 5,90 mm	3,60
1,30 mm x 6,70 mm	2,80

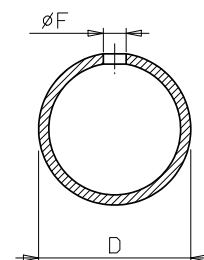


BEADS BY SHEET

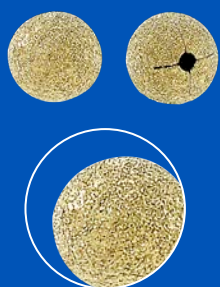
STAMPED BEADS - 1 HOLE



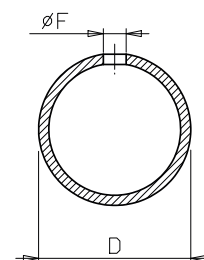
P1F	D mm	∅F mm	Weight AU 750 (Pcs/Gr)
P1F 3.0	3,00	0,90	11,00
P1F 4.0	4,00	0,90	5,80
P1F 5.0	5,00	0,90	2,90
P1F 6.0	6,00	0,90	2,00



STARDUST STAMPED BEADS - 1 HOLE



P1FP	D mm	∅F mm	Weight AU 750 (Pcs/Gr)
P1FP 3.0	3,00	0,90	11,00
P1FP 4.0	4,00	0,90	5,80
P1FP 5.0	5,00	0,90	2,90
P1FP 6.0	6,00	0,90	2,00

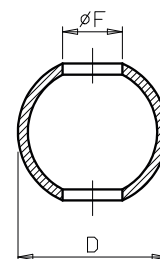


BEADS BY TUBE

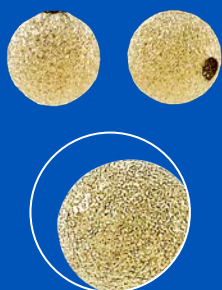
SMOOTH BEADS



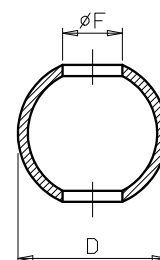
P2L	D mm	∅F mm	Weight AU 750 (Pcs/Gr)
P2L 1.8	1,80	0,80	43,50
P2L 2.0	2,00	0,90	31,30
P2L 2.2	2,2	1,0	27,40
P2L 2.5	2,5	0,9	17,80
P2L 2.5	2,5	1,2	21,50
P2L 3.0	3,0	1,0	11,50
P2L 3.0	3,0	1,2	12,00
P2L 3.0	3,0	1,5	12,40
P2L 4.0	4,0	1,5	7,40
P2L 4.0	4,0	1,8	6,50
P2L 5.0	5,0	1,8	3,80
P2L 5.0	5,0	2,2	3,70



STARDUST BEADS



P2P	D mm	∅F mm	Weight AU 750 (Pcs/Gr)
P2P 3.0	3,00	1,20	12,00
P2P 4.0	4,00	1,50	7,40
P2P 4.0	4,00	1,80	6,50
P2P 5.0	5,00	1,80	3,80
P2P 5.0	5,00	2,20	3,70

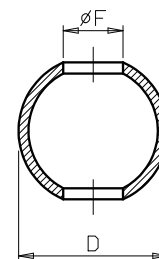


BEADS BY TUBE

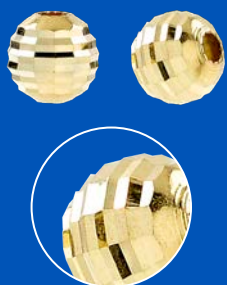
DIAMOND CUT BEADS - DISCO



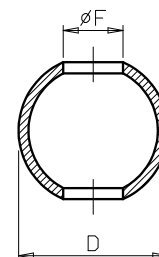
P2D	D mm	øF mm	Number of lines	Degrease	Weight AU 750 (Pcs/Gr)
P2D 2.5 - disco	2,50	0,90	3	180°	22,20
P2D 2.5 - disco	2,50	1,20	3	180°	23,30
P2D 3.0 - disco	3,00	1,00	3	180°	12,30
P2D 3.0 - disco	3,00	1,20	3	180°	14,10
P2D 3.0 - disco	3,00	1,50	3	180°	15,40
P2D 4.0 - disco	4,00	1,50	3	180°	7,50
P2D 4.0 - disco	4,00	1,80	3	180°	8,10
P2D 5.0 - disco	5,00	1,80	5	180°	4,40
P2D 5.0 - disco	5,00	2,20	5	180°	4,90



DIAMOND CUT BEADS - VERTICAL



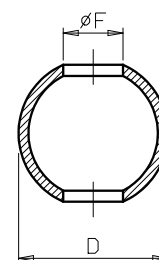
P2D	D mm	øF mm	Number of lines	Degrease	Weight AU 750 (Pcs/Gr)
P2D 2.0 - vertical	2,00	0,90	3	130°	41,90
P2D 2.2 - vertical	2,20	1,00	3	130°	39,90
P2D 2.5 - vertical	2,50	1,20	3	130°	29,70
P2D 3.0 - vertical	3,00	1,20	3	150°	14,80



DIAMOND CUT BEADS - DIAGONAL / SLASH



P2D	D mm	øF mm	Number of lines	Degrease	Weight AU 750 (Pcs/Gr)
P2D 2.0 - diago	2,00	0,90	3	130°	41,60
P2D 2.2 - diago	2,20	1,00	3	130°	31,20
P2D 2.5 - diago	2,50	0,90	3	130°	24,40
P2D 2.5 - diago	2,50	1,20	3	130°	25,60
P2D 3.0 - diago	3,00	1,00	3	130°	13,30
P2D 3.0 - diago	3,00	1,20	3	130°	14,90
P2D 3.0 - diago	3,00	1,50	3	130°	16,10
P2D 4.0 - diago	4,00	1,50	4	130°	9,00
P2D 4.0 - diago	4,00	1,50	3	150°	9,00
P2D 4.0 - diago	4,00	1,80	4	130°	7,30
P2D 4.0 - diago	4,00	1,80	3	150°	7,30
P2D 5.0 - diago	5,00	1,80	3	150°	4,20
P2D 5.0 - diago	5,00	2,20	3	150°	5,60



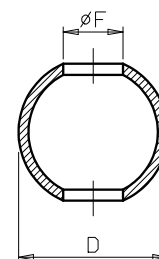
The number of lines refers to the number of diamond cut lines. The degrees refer to the diamond's cutting angle.

BEADS BY TUBE

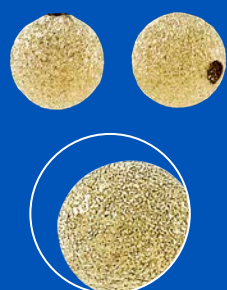
SMOOTH LIGHT BEADS



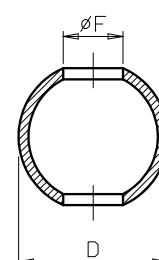
P2L LIGHT	D mm	øF mm	Weight AU 750 (Pcs/Gr)
P2L 4.0 light	4,00	1,40	7,10
P2L 5.0 light	5,00	1,60	5,00
P2L 6.0 light	6,00	1,60	2,80
P2L 8.0 light	8,00	1,60	1,45
P2L 10.0 light	10,00	1,80	0,70
P2L 12.0 light	12,00	3,50	0,50



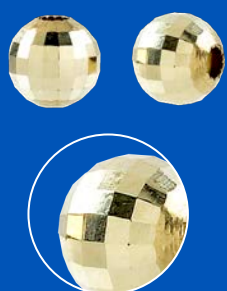
STARDUST LIGHT BEADS



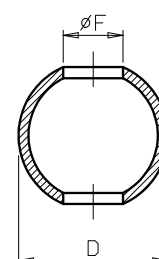
P2P LIGHT	D mm	øF mm	Weight AU 750 (Pcs/Gr)
P2P 5.0 light	5,00	1,60	5,00
P2P 6.0 light	6,00	1,60	2,80
P2P 8.0 light	8,00	1,60	1,45
P2P 10.0 light	10,00	1,80	0,70
P2P 12.0 light	12,00	3,50	0,50



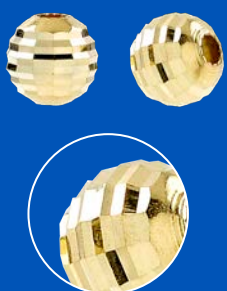
DIAMOND CUT LIGHT BEADS - DISCO



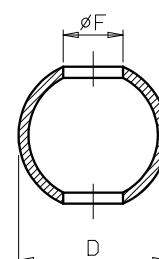
P2D LIGHT	D mm	øF mm	Number of lines	Degree	Weight AU 750 (Pcs/Gr)
P2D 5.0 lig - disco	5,00	1,60	5	180°	7,30
P2D 6.0 lig - disco	6,00	1,60	5	180°	4,40
P2D 8.0 lig - disco	8,00	1,60	5	180°	2,80



DIAMOND CUT LIGHT BEADS - VERTICAL



P2D LIGHT	D mm	øF mm	Number of lines	Degree	Weight AU 750 (Pcs/Gr)
P2D 4.0 lig - vertical	4,00	1,40	5	150°	7,60
P2D 5.0 lig - vertical	5,00	1,60	5	150°	5,45
P2D 6.0 lig - vertical	6,00	1,60	5	150°	4,20
P2D 8.0 lig - vertical	8,00	1,60	7	150°	2,45
P2D 10.0 lig - vertical	10,00	1,80	9	150°	1,05



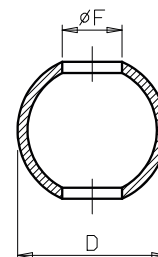
The number of lines refers to the number of diamond cut lines. The degrees refer to the diamond's cutting angle.

BEADS BY TUBE

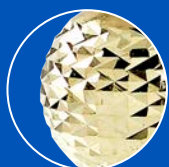
DIAMOND CUT LIGHT BEADS - DIAGONAL / SLASH



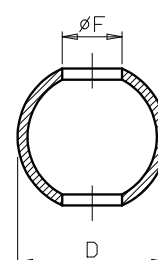
P2D LIGHT	D mm	∅F mm	Number of lines	Degrease	Weight AU 750 (Pcs/Gr)
P2D 4.0 lig - diago	4,00	1,40	4	130°	11,00
P2D 5.0 lig - diago	5,00	1,60	5	130°	6,80
P2D 6.0 lig - diago	6,00	1,60	6	130°	4,00
P2D 8.0 lig - diago	8,00	1,60	7	150°	1,90
P2D 10.0 lig - diago	10,00	1,80	7	150°	1,05
P2D 12.0 lig - diago	12,00	3,50	7	150°	0,55



DIAMOND CUT LIGHT BEADS - CROSS CUT



P2D LIGHT	D mm	∅F mm	Number of lines	Degrease	Weight AU 750 (Pcs/Gr)
P2D 8.0 lig - cross	8,00	1,60	7+7	150°	2,10
P2D 10.0 lig - cross	10,00	1,80	7+7	150°	0,95



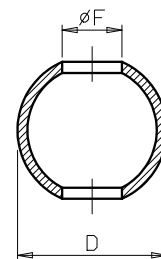
The number of lines refers to the number of diamond cut lines. The degrees refer to the diamond's cutting angle.

BEADS BY TUBE

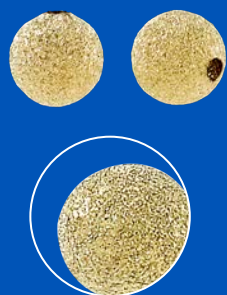
SMOOTH SUPERLIGHT BEADS



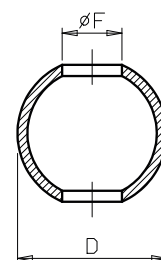
P2L SL	D mm	øF mm	Weight AU 750 (Pcs/Gr)
P2L 2.5 Superlight	2,50	1,00	40,50
P2L 3.0 Superlight	3,00	1,20	34,90
P2L 4.0 Superlight	4,00	1,50	18,50
P2L 5.0 Superlight	4,00	1,40	12,00
P2L 5.0 Superlight	5,00	1,80	12,20
P2L 6.0 Superlight	6,00	1,40	6,60
P2L 6.0 Superlight	6,00	2,00	7,30
P2L 7.0 Superlight	7,00	1,40	4,00
P2L 8.0 Superlight	8,00	1,80	2,40
P2L 9.0 Superlight	9,00	1,90	1,75
P2L 10.0 Superlight	10,00	2,30	1,40
P2L 12.0 Superlight	12,00	3,20	1,15



STARDUST SUPERLIGHT BEADS



P2P SL	D mm	øF mm	Weight AU 750 (Pcs/Gr)
P2P 2.5 Superlight	2,50	1,00	41,60
P2P 3.0 Superlight	3,00	1,20	35,00
P2P 4.0 Superlight	4,00	1,50	19,50
P2P 5.0 Superlight	5,00	1,40	12,20
P2P 5.0 Superlight	5,00	1,80	12,80
P2P 6.0 Superlight	6,00	1,40	6,10
P2P 6.0 Superlight	6,00	2,00	7,10
P2P 7.0 Superlight	7,00	1,40	4,05
P2P 8.0 Superlight	8,00	1,80	2,50
P2P 9.0 Superlight	9,00	1,90	1,70
P2P 10.0 Superlight	10,00	2,30	1,45
P2P 12.0 Superlight	12,00	3,20	1,20

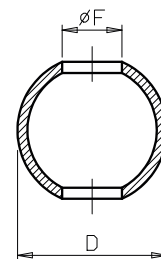


BEADS BY TUBE

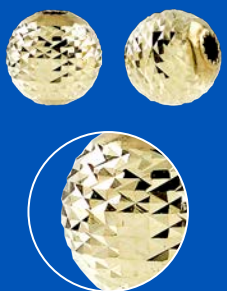
SATIN SUPERLIGHT BEADS



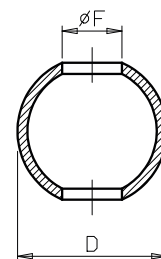
P2S SL	D mm	∅F mm	Weight AU 750 (Pcs/Gr)
P2S 4.0 Superlight	4,00	1,50	18,00
P2S 5.0 Superlight	5,00	1,40	12,70
P2S 5.0 Superlight	5,00	1,80	12,90
P2S 6.0 Superlight	6,00	1,40	6,95
P2S 6.0 Superlight	6,00	2,00	7,10
P2S 7.0 Superlight	7,00	1,40	4,30
P2S 8.0 Superlight	8,00	1,80	2,50
P2S 9.0 Superlight	9,00	1,90	1,70
P2S 10.0 Superlight	10,00	2,30	1,45
P2S 12.0 Superlight	12,00	3,20	1,30



DIAMOND CUT SUPERLIGHT BEADS - CROSS CUT

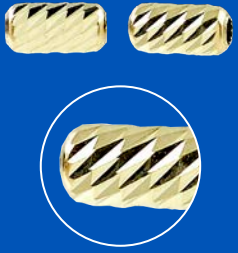


P2D SL	D mm	∅F mm	Number of lines	Degree	Weight AU 750 (Pcs/Gr)
P2D 4.0 SL - cross	4,00	1,40	5+5	150°	12,05
P2D 5.0 SL - cross	5,00	1,60	6+6	150°	9,45
P2D 6.0 SL - cross	6,00	1,80	6+6	150°	4,75

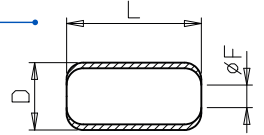


The number of lines refers to the number of diamond cut lines. The degrees refer to the diamond's cutting angle.

DIAMOND CYLINDERS - DIAGONAL / SLASH



CD	D mm	∅F mm	Number of lines	Degree	Weight AU 750 (Pcs/Gr)
CD 3.0 diago	3,00	1,30	5	130°	7,90
CD 4.0 diago	4,00	1,80	5	130°	4,60
CD 5.0 diago	5,00	2,20	5	130°	2,55



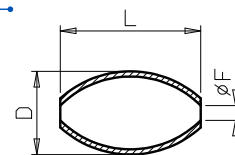
The number of lines refers to the number of diamond cut lines. The degrees refer to the diamond's cutting angle.

OVAL BEADS

SMOOTH OVALS



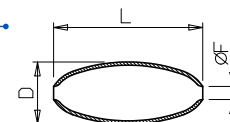
OVL	D mm	L mm	ØF mm	Weight AU 750 (Pcs/Gr)
OVL 3,0	3,00	4,50	1,20	7,30
OVL 4,0	4,00	6,70	1,30	3,50
OVL 5,0	5,00	8,00	2,10	2,10



SMOOTH LONG OVALS



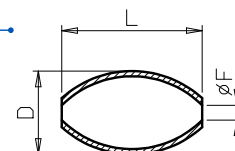
OVL long	D mm	L mm	ØF mm	Weight AU 750 (Pcs/Gr)
OVL 4,0 long	4,00	9,60	1,00	2,35
OVL 5,0 long	5,00	12,00	1,40	1,35



DIAMOND CUT OVALS - DISCO



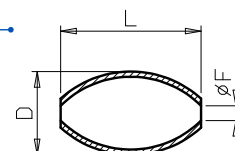
OVD	D mm	L mm	ØF mm	Number of lines	Degree	Weight AU 750 (Pcs/Gr)
OVD 3.0 disco	3,00	4,50	1,20	5	180°	9,50
OVD 4.0 disco	4,00	6,70	1,30	7	180°	5,30
OVD 5.0 disco	5,00	8,00	2,10	7	180°	3,00



DIAMOND CUT OVALS - DIAGONAL / SLASH



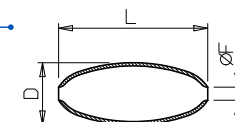
OVD	D mm	L mm	ØF mm	Number of lines	Degree	Weight AU 750 (Pcs/Gr)
OVD 3.0 diago	3,00	4,50	1,20	4	130°	11,80
OVD 4.0 diago	4,00	6,70	1,30	4	130°	4,90
OVD 5.0 diago	5,00	8,00	2,10	4	130°	3,10



DIAMOND CUT LONG OVALS DIAGONAL / SLASH



OVD LONG DIAGONAL	D mm	L mm	ØF mm	Number of lines	Degree	Weight AU 750 (Pcs/Gr)
OVD 3.0 long diago	3,00	7,64	0,90	5	130°	9,10
OVD 4.0 long diago	4,00	9,60	1,00	5	130°	4,10
OVD 5.0 long diago	5,00	12,00	1,40	10	130°	2,05



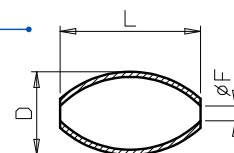
The number of lines refers to the number of diamond cut lines. The degrees refer to the diamond's cutting angle.

OVAL BEADS

SMOOTH SUPERLIGHT OVALS



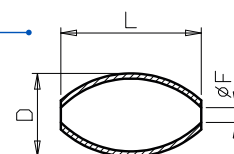
OVL SL	D mm	L mm	ØF mm	Weight AU 750 (Pcs/Gr)
OVL 3,0 Superlight	3,00	4,50	1,30	21,50
OVL 4,0 Superlight	4,00	6,70	1,30	11,05
OVL 5,0 Superlight	5,00	8,00	1,40	6,75
OVL 6,0 Superlight	6,00	10,20	1,60	3,90
OVL 8,0 Superlight	8,00	13,50	1,60	1,50
OVL 10,0 Superlight	10,00	15,00	2,20	0,90



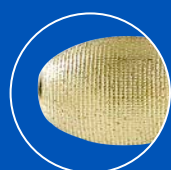
STARDUST SUPERLIGHT OVALS



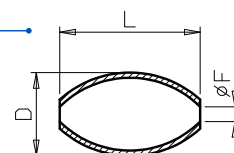
OVP SL	D mm	L mm	ØF mm	Weight AU 750 (Pcs/Gr)
OVP 3,0 Superlight	3,00	4,50	1,30	20,55
OVP 4,0 Superlight	4,00	6,70	1,30	10,60
OVP 5,0 Superlight	5,00	8,00	1,40	7,20
OVP 6,0 Superlight	6,00	10,20	1,60	4,25
OVP 8,0 Superlight	8,00	13,50	1,60	1,50
OVP 10,0 Superlight	10,00	15,00	2,20	0,95



SATIN SUPERLIGHT OVALS



OVS SL	D mm	L mm	ØF mm	Weight AU 750 (Pcs/Gr)
OVS 4,0 Superlight	4,00	6,70	1,30	11,40
OVS 5,0 Superlight	5,00	8,00	1,40	7,70
OVS 6,0 Superlight	6,00	10,20	1,60	4,25
OVS 8,0 Superlight	8,00	13,50	1,60	1,55
OVS 10,0 Superlight	10,00	15,00	2,20	1,05



GOLD CONVERSION CHART

CARATS	COEFFICIENT
917	1,18
875	1,15
800	1,04
750	1,00
585	0,85
417	0,74
375-333	0,73

